

GTS-AB Series

Diameter Ø38mm Solid shaft Ø 6mm AB phases type

■ Features

- Miniature size, easy assembling, low cost
- 2 quadrature output channel (A&B)
- Low cost and high performance
- Resolution 100-1024 PPR



■ Specification

Brand		GTEACH
Item		Diameter 38mm shaft 6mm type incremental rotary encoder
Resolution(P/R)		100 200 256 300 360 400 500 600 1000 1024
Output Phase		AB Phase
Output Type		NPN Open Collector, Voltage, Push-pull, Line driver 5V
Electrical	Supply Voltage	5-24VDC
	Current consumption	Max.80mA (Disconnection of the load), Line drive output: Max. 50mA (Disconnection of the load)
	Response frequency	Max. 200Khz
	Allowable revolution	Max. 3000 rev/min
Mechanical	Starting torque	Max. 40gf.cm (0.004N.m)
	Rotor inertia	Max. 40g.cm ² (4.0*10 ⁻⁶ kg.m ²)
	Shaft loading	Radial: Max. 2kgf Thrust: Max. 1kgf
	Mechanical Speed	Max. 5000 rev/min (*1)
Environmental	Ambient temperature	-10~70 (at non-freezing status), Storage: -25~85
	Ambient humidity	35~85%RH, Storage: 35~90%RH
	Protection	IP52 (IEC standard)
	Vibration	1.5mm amplitude at frequency of 10-55 Hz in each of X,Y, Z direction for 2 hours.
	Shock	Max. 50G
Unit weight		Approx.: 160g
Cable		2.0m (The cable length can be customized)
Connection		Cable outgoing type
Insulation resistance		Min. 100MΩ (at 500VDC)
Approval		CE ROHS

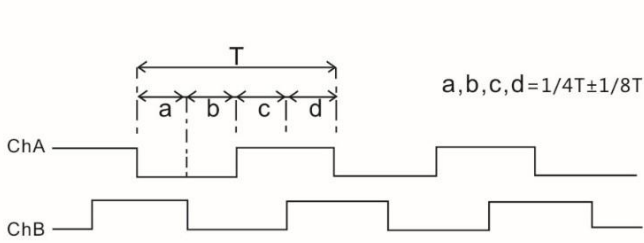
(*1) Mechanical speed > Allowable revolution, Please take allowable speed as standard when use

GTS-AB Series

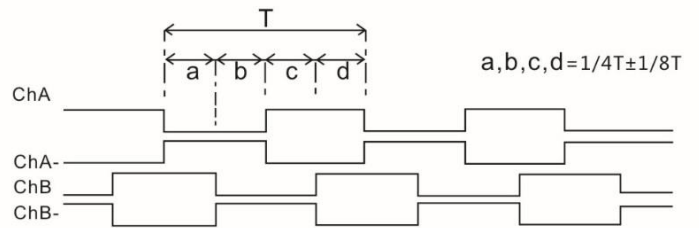
Ordering information

GTS-	06-	OC-	RA600B-	2M
Series	Shaft	Output type	RESOLUTION	Cable Length
GTS	06: 6mm	OC: NPN VE: Voltage OP: Push-Pull LD: Line driver 5V	100-1024	2M: 2 meters

Output Waveform



• Voltage type



• Line driver type

Dimension

