

B-3216X & B-3216EG series ...

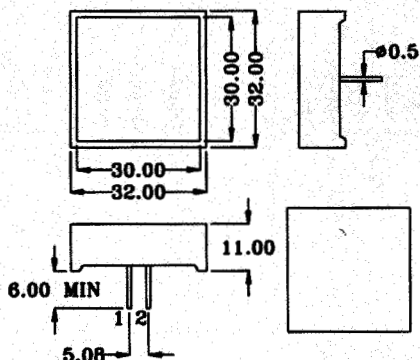
32mm x 32mm SQUARE LIGHT BAR

- MAIN FEATURES ;**
- 32mm x 32mm SQUARE LIGHT BAR
 - LOW POWER REQUIREMENT
 - CAN BE USED WITH PANEL AND LEGEND MOUNT
 - SUITABLE FOR MULTIPLEX OPERATION
 - EASY MOUNTING ON P.C. BOARD

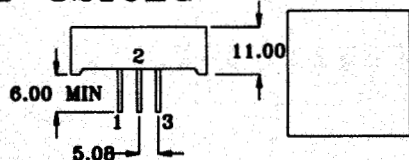
◆ **PACKAGE DIMENSIONS**

◆ **PIN CONNECTION AND INTERNAL CIRCUIT**

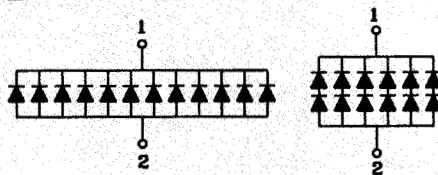
B-3216X



B-3216EG



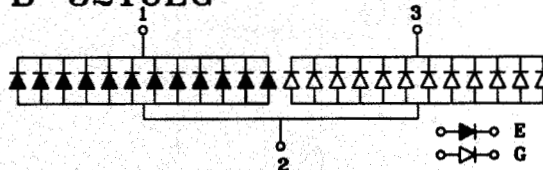
B-3216X B-3216X-5



B-3216X-12



B-3216EG



NOTES:

1. All Dimension are in millimeter (inches).
2. Tolerance is $\pm 0.25\text{mm}$ ($0.010''$) unless otherwise specified.

◆ **SELECTION GUIDE AND APPLICATION INFORMATION (RATINGS AT 25°C AMBIENT)**

Part No.	Remark 1 Selection of Surface Color	Chip Raw Material	Chip Emitted Color	C.C. or C.A.	Wave Length λ p(nm)	Absolute Maximum Ratings				Electro-Optical Characteristics					
						$\Delta \lambda$	Pd	If	If (Peak)	Vf(V)			If Iv(mcd)		
						nm	mW	mA	(Peak)	Min.	Typ.	Max.	(Rec)	Min.	Typ.
B-3216E	R	GaAsP/GaP	Hi.effi Red		635	45	100	30	160	1.7	2.0	2.8	10~20	10.0	24.0
B-3216G	G	GaP	Green		565	30	100	30	160	1.7	2.1	2.8	10~20	10.0	20.0
B-3216Y	E,Y	GaAsP/GaP	Yellow		585	30	100	30	160	1.7	2.1	2.8	10~20	10.0	20.0
B-3216SR	R	GaAlAs	Super Red		660	20	60	20	160	1.6	1.8	2.1	10~20	20.0	50.0
B-3216E-5	R	GaAsP/GaP	Hi.effi Red		635	45	100	30	160	3.4	4.0	5.6	10~20	10.0	24.0
B-3216G-5	G	GaP	Green		565	30	100	30	160	3.4	4.2	5.6	10~20	10.0	20.0
B-3216Y-5	E,Y	GaAsP/GaP	Yellow		585	30	100	30	160	3.4	4.2	5.6	10~20	10.0	20.0
B-3216SR-5	R	GaAlAs	Super Red		660	20	60	20	160	3.4	3.6	4.2	10~20	20.0	50.0
B-3216E-12	R	GaAsP/GaP	Hi.effi Red		635	45	100	30	160	10.2	12.0	16.8	10~20	10.0	24.0
B-3216G-12	G	GaP	Green		565	30	100	30	160	10.2	12.6	16.8	10~20	10.0	20.0
B-3216SR-12	R	GaAlAs	Super Red		660	20	60	20	160	9.6	10.8	12.6	10~20	20.0	50.0
B-3216EG	W	GaAsP/GaP	Hi.effi Red	Common	635	45	100	30	160	1.7	2.0	2.8	10~20	10.0	24.0
		GaP	Green	Anode	565	30	100	30	160	1.7	2.1	2.8	10~20	10.0	20.0

Remark 1 : Selection of Surface color

- R : Red Diffused
- G : Green Diffused
- Y : Yellow Diffused

- E : Orange Diffused
- W : White Diffused

◆ **ABSOLUTE MAXIMUM RATING: (Ta=25°C)**

Reverse Voltage	: 5 Volt
Reverse Current (Vr = 5V)	: 10 μ A
Operating Temperature Range	: -40°C to +85°C
Storage Temperature Range	: -40°C to +100°C
Lead Soldering Temperature	: 260°C for 5 Seconds
(1.6mm/1/16inch) from body)	

◆ **ELECTRO-OPTICAL CHARACTERISTICS: (Ta=25°C)**

Parameter Description	Symbol	Unit
Spectral Line half-Width	$\Delta \lambda$	nm
Power Dissipation	Pd	mW
Peak Forward Current (Duty 1/10, @KHz)	If(Peak)	mA
Recommended Operation Current	If(Rec)	mA
Average Luminous intensity (If = 10mA)	Iv	mcd