

Product Type: DC Digital Multi-function Meter

Product Model: PZEM-051

Product Function:

1. Electrical parameter measurement function (voltage, current, active power, energy)
2. Voltage alarm function (over voltage alarm threshold, backlight and voltage flashing to alarm).
3. The reset function of energy key.
4. Store data when power off.
5. Large-screen LCD (display voltage, current, active power, energy at the same time)
6. Backlight function.

Measurement range:

1. Power: test range: 0~10kW

within 1KW, the display format is 0.0~999.9W;

1KW and above, the display format is 1000~9999W.

2. Energy: test range: 0~9999kWh

Within 10KWh, the display format is 0~9999Wh;

10kWh and above, the display format is 10~9999kWh.

3. Voltage: test range: 6.5~100V

Display format: 6.50~99.99V

4. Current: test range: 0~100A

Display format: 0.00~99.99

# DC DIGITAL MULTI-FUNCTION METER

## INSTRUCTION MANUAL

### MODEL: PZEM-031/PZEM-051

---

#### A. Function

1. Electrical parameter measurement function (voltage, current, active power, energy)
2. Voltage alarm function (over voltage alarm threshold, backlight and voltage flashing to alarm).
3. The reset function of energy key.
4. Store data when power off.
5. Large-screen LCD (display voltage, current, active power, energy at the same time)
6. Backlight function.

#### B. Display Interface

Display interface is large-screen LCD, it can display voltage, current, power, energy parameters at the same time.

## C. Display format

### PZEM-031 Display format

**Power:** test range: 0~2kW

Within 1KW, the display format is 0.0~999.9W;

1KW and above, the display format is 1000~2000W.

**Energy:** test range: 0~9999kWh

Within 10KWh, the display format is 0~9999Wh;

10kWh and above, the display format is 10~9999kWh.

**Voltage:** test range: 6.5~100V

Display format: 6.50~99.99V

**Current:** test range: 0~20A

Display format: 0.00~20.00A

### PZEM-051 Display format

**Power:** test range: 0~10kW

Within 1KW, the display format is 0.0~999.9W;

1KW and above, the display format is 1000~9999W.

**Energy:** test range: 0~9999kWh

Within 10KWh, the display format is 0~9999Wh;

10kWh and above, the display format is 10~9999kWh.

**Voltage:** test range: 6.5~100V

Display format: 6.50~99.99V

**Current:** test range: 0~100A

Display format: 0.00~99.99A

**Accuracy:**  $\leq 1\%$ , the lower the better

## D. Specification parameters

### PZEM-031

**Working voltage:** 6.5~100VDC

**Test voltage:** 6.5~100VDC

**Rated power:** 20A/2000W

**Measurement accuracy:** 1.0 grade

### PZEM-051

**Working voltage:** 6.5~100VDC

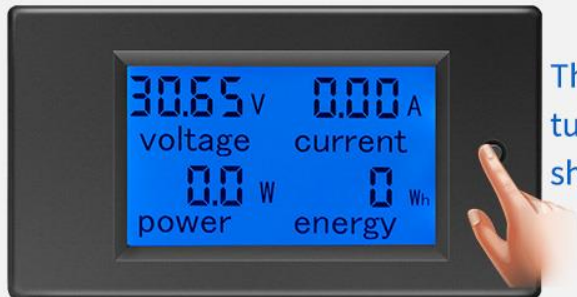
**Test voltage:** 6.5~100VDC

**Rated power:** 100A/10000W

**Measurement accuracy:** 1.0 grade

## E. Backlight control

Short press the key to turn on or off the backlight, the backlight has memory function, it can store the on or off state when power off.



The backlight can be turned on or off by short press the key

## F. Other Function

### 1. Reset energy

- Step 1** Long press the key until the power display area display “CLR”, then release the key.
- Step 2** At this moment, the energy is flashing to prompt this is the energy reset state, if short press the key again, then the energy value is cleared and exit the reset flashing state.
- Step 3** If there is no operation within 5 seconds, it means the energy value is not cleared and will exit the reset state.

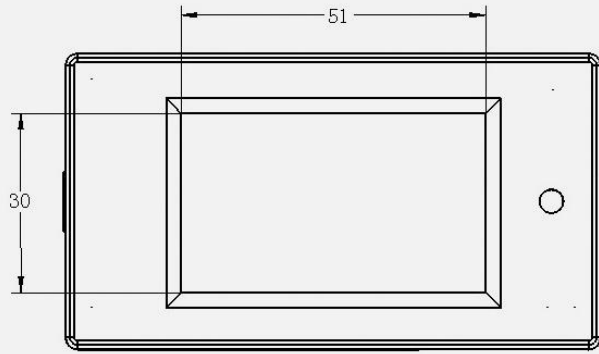
### 2. Set voltage alarm threshold

- Step 1** Long press the key until the power display area display “SET”, then release the key.
- Step 2** After enter this state, the voltage area display the current high voltage alarm value, the current area display the current low voltage alarm value and the last digit begin to flash, then you can short press to plus 1, when there is no operation over 3 seconds, it will switch the digit position automatically, from the high voltage alarm value to the low voltage alarm value, there are total six digits, the range of the voltage alarm threshold is 6.5~99.9V;
- Step 3** After finish the setting, long press the key until the screen display “PASS” that means you set successfully and will exit the setting state automatically.

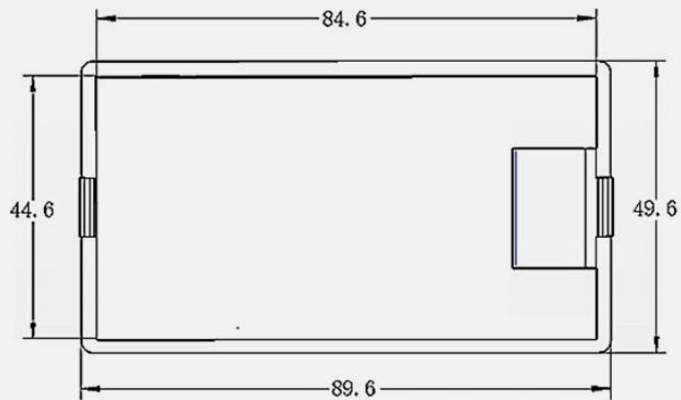
### 3. RANGE SELECTION

- Step 1** Press the key long enough for the “CURR” character to appear in the power display area, then release the key
- Step 2** The current area shows the “100A” short button switching between “100A” and “50A” to indicate the range of the external shunt is 100A/75MV or 50A/75MV.
- Step 3** Long press until the settings or keyless operation 3 seconds after the automatic save and exit settings.

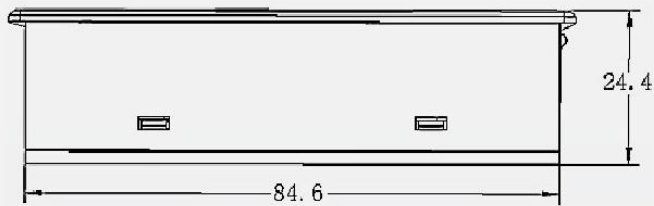
## G. Dimension diagram (mm)



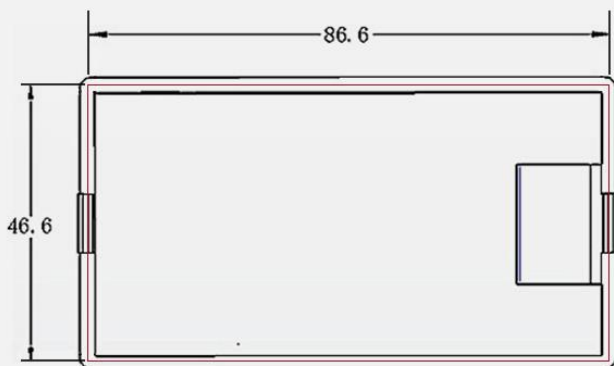
Screen size



Apparent size



Height dimension

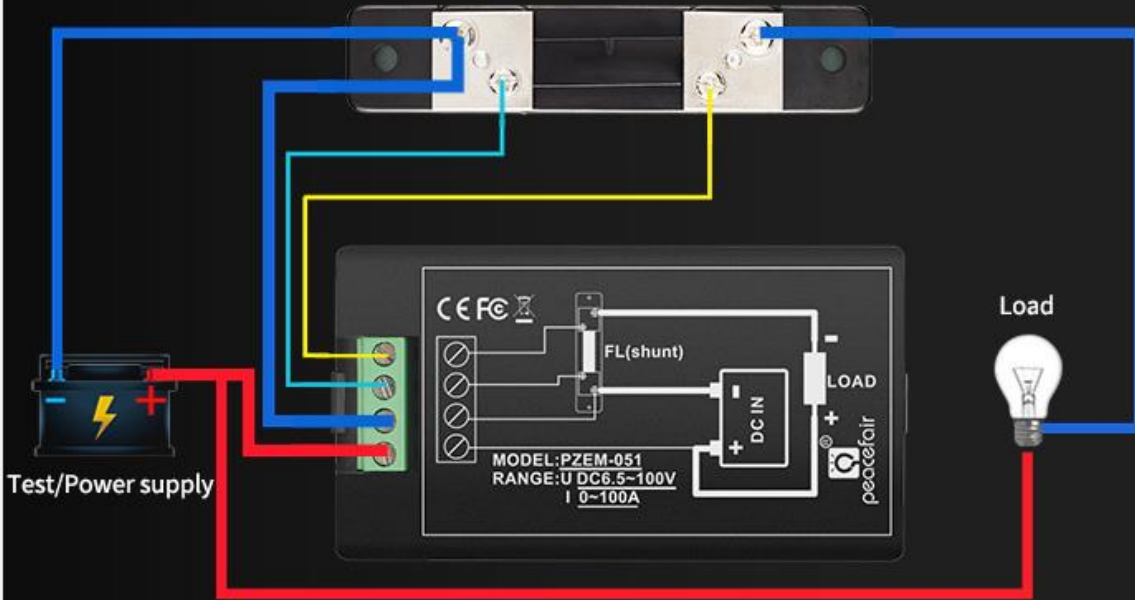


Opening size

Figure 1 dimension diagram (mm)



50A/75mV shunt



PZEM-051 (back)+50A shunt



50A/75mV shunt

PZEM-051 (front)+50A shunt