



Features

- RoHS compliant*
- Convex and concave terminals
- 2, 4 or 8 isolated elements available
- Resistance tolerance $\pm 1\%$ and $\pm 5\%$
- Resistance range: 10 ohms to 1 megohm

CAT/CAY 16 Series - Chip Resistor Arrays

Specifications

Requirement	Characteristics	Test Method
Short Time Overload	$\pm 2\% + 0.1$ ohm	Rated Voltage X 2.5, 5 seconds
Soldering Heat	$\pm 2\% + 0.1$ ohm	260 °C ± 5 °C, 10 seconds ± 1 second
Temperature Cycling (5)	$\pm 1\% + 0.1$ ohm	125 °C (30 minutes) - normal (15 minutes) -55 °C (30 minutes) - normal (15 minutes)
Moisture Load Life	$\pm 3\% + 0.1$ ohm	1000 hours
Load Life	$\pm 3\% + 0.1$ ohm	1000 hours

Characteristics

Characteristics	CAT16/CAY16
Number of Elements	2 (J2), 4 (F4, J4), 8 (F8, J8)
Power Rating Per Resistor	62 mW (31 mW for CAY16-J8)
Resistance Tolerance	$\pm 1\%$, $\pm 5\%$
Resistance Range: E24 (J), E96 + E24 (F) Zero-Ohm Jumper < 0.05 ohm	10 ohms - 1 megohm
Max. Working Voltage	50 V (25 V for CAY16-J8)
Operating Temp. Range	-55 °C - 125 °C

Soldering Profile for RoHS Compliant Chip Resistors and Arrays



How To Order

CA Y 16 - 103 J 4 LF

Chip Arrays _____
 Type _____
 • CAT16 = Concave Terminations
 • CAY16 = Convex Terminations
 Resistance Code _____
 • 103 = 10 K ohms
 • 1003 = 100 K ohms (1 % tolerance)
 • 000 = Zero-ohm
 Resistance Tolerance _____
 • J = $\pm 5\%$ (Use "J" for zero-ohm jumper)
 • F = $\pm 1\%$ (4 resistor pkg. and CAT16-F8)
 Resistors _____
 • 2 = 2 Isolated Resistors
 • 4 = 4 Isolated Resistors
 • 8 = 8 Isolated Resistors
 Terminations _____
 • LF = Tin-plated (RoHS compliant)

Packaging Size

J2 0606 Package Size
 F4, J4 1206 Package Size
 F8 2406 Package Size for CAT16
 J8 2406 Package Size for CAT16;
 1506 Package Size for CAY16

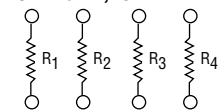
For Standard Values Used in Capacitors, Inductors, and Resistors, [click here](#).

Schematics

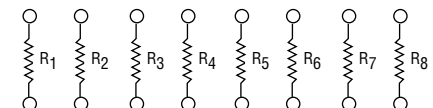
**CAT16-J2
CAY16-J2**



**CAT16-F4, -J4
CAY16-F4, -J4**



**CAT16-F8, -J8
CAY16-J8**



*RoHS Directive 2002/95/EC Jan 27 2003 including Annex.
 Specifications are subject to change without notice.

Customers should verify actual device performance in their specific applications.

CAT/CAY 16 Series - Chip Resistor Arrays

BOURNS®

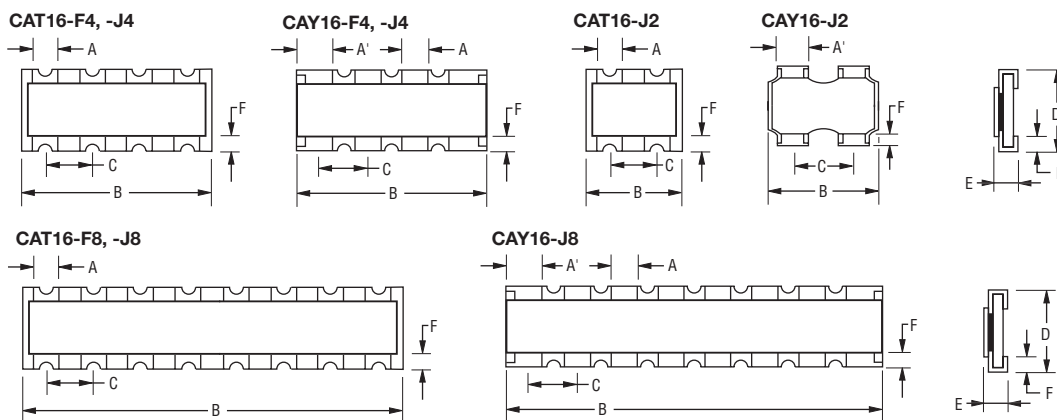
Derating Curve



Dimensions

Model	A	A'	B	C	D	E	F
CAT16-F4	$\frac{0.40 \pm 0.15}{(.016 \pm .006)}$	—	$\frac{3.20 \pm 0.20}{(.126 \pm .008)}$	$\frac{0.80 \pm 0.10}{(.032 \pm .004)}$	$\frac{1.60 \pm 0.20}{(.063 \pm .008)}$	$\frac{0.50 \pm 0.10}{(.020 \pm .004)}$	$\frac{0.30 \pm 0.15}{(.012 \pm .006)}$
CAT16-J4	$\frac{0.40 \pm 0.15}{(.016 \pm .006)}$	—	$\frac{3.20 \pm 0.20}{(.126 \pm .008)}$	$\frac{0.80 \pm 0.10}{(.032 \pm .004)}$	$\frac{1.55 \pm 0.25}{(.061 \pm .0098)}$	$\frac{0.50 \pm 0.10}{(.020 \pm .004)}$	$\frac{0.30 \pm 0.20}{(.012 \pm .008)}$
CAY16-F4, -J4	$\frac{0.50 \pm 0.15}{(.002 \pm .006)}$	$\frac{0.70 \pm 0.10}{(.027 \pm .004)}$	$\frac{3.20 \pm 0.20}{(.126 \pm .008)}$	$\frac{0.80 \pm 0.05}{(.032 \pm .002)}$	$\frac{1.60 \pm 0.20}{(.063 \pm .008)}$	$\frac{0.50 \pm 0.10}{(.020 \pm .004)}$	$\frac{0.30 \pm 0.20}{(.012 \pm .008)}$
CAT16-J2	$\frac{0.40 \pm 0.15}{(.016 \pm .006)}$	—	$\frac{1.60 \pm 0.15}{(.063 \pm .006)}$	$\frac{0.80 \pm 0.05}{(.032 \pm .002)}$	$\frac{1.60 \pm 0.15}{(.063 \pm .006)}$	$\frac{0.60 \pm 0.15}{(.024 \pm .006)}$	$\frac{0.30 \pm 0.20}{(.012 \pm .008)}$
CAY16-J2	—	$\frac{0.60 \pm 0.15}{(.024 \pm .006)}$	$\frac{1.60 \pm 0.15}{(.063 \pm .006)}$	$\frac{0.76 \pm 0.10}{(.030 \pm .004)}$	$\frac{1.60 \pm 0.15}{(.063 \pm .006)}$	$\frac{0.45 + 0.15/-0.10}{(.018 + 0.006/-0.004)}$	$\frac{0.30 \pm 0.20}{(.012 \pm .008)}$
CAT16-F8, -J8	$\frac{0.40 \pm 0.15}{(.016 \pm .006)}$	—	$\frac{6.40 \pm 0.20}{(.252 \pm .008)}$	$\frac{0.80 \pm 0.15}{(.032 \pm .006)}$	$\frac{1.60 \pm 0.20}{(.063 \pm .008)}$	$\frac{0.60 \pm 0.15}{(.024 \pm .006)}$	$\frac{0.30 \pm 0.20}{(.012 \pm .008)}$
CAY16-J8	$\frac{0.30 \pm 0.15}{(.012 \pm .006)}$	$\frac{0.30 \pm 0.15}{(.012 \pm .006)}$	$\frac{3.80 \pm 0.20}{(.15 \pm .008)}$	$\frac{0.50 \pm 0.05}{(.02 \pm .002)}$	$\frac{1.60 \pm 0.20}{(.063 \pm .008)}$	$\frac{0.50 \pm 0.10}{(.02 \pm .004)}$	$\frac{0.30 \pm 0.15}{(.012 \pm .006)}$

Configurations



DIMENSIONS: $\frac{\text{MM}}{(\text{INCHES})}$

Specifications are subject to change without notice. Customers should verify actual device performance in their specific applications.

CAT/CAY 16 Series - Chip Resistor Arrays

BOURNS®

Land Patterns

CAT16-F4, -J4, -F8, -J8



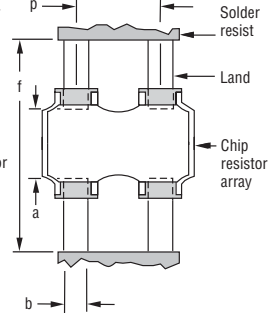
CAY16-F4, -J4, -J8



CAT16-J2



CAY16-J2



Model	a	b	p	f
CAT16-F4, -J4, -F8, -J8	$\frac{0.7 \text{ to } 0.9}{(.028 \text{ to } .035)}$	$\frac{0.4 \text{ to } 0.45}{(.016 \text{ to } .0178)}$	$\frac{0.80}{(.032)}$	$\frac{2.2 \text{ to } 2.6}{(.087 \text{ to } .102)}$
CAY16-F4, -J4	$\frac{0.7 \text{ to } 0.9}{(.028 \text{ to } .035)}$	$\frac{0.4 \text{ to } 0.45}{(.016 \text{ to } .0178)}$	$\frac{0.80}{(.032)}$	$\frac{2.4 \text{ to } 2.8}{(.094 \text{ to } .11)}$
CAY16-J8	$\frac{0.7 \text{ to } 0.9}{(.028 \text{ to } .035)}$	$\frac{0.3 \text{ to } 0.35}{(.012 \text{ to } .014)}$	$\frac{0.50}{(.020)}$	$\frac{2.0 \text{ to } 2.2}{(.079 \text{ to } .087)}$
CAT16-J2	$\frac{0.7 \text{ to } 0.9}{(.028 \text{ to } .035)}$	$\frac{0.4 \text{ to } 0.45}{(.016 \text{ to } .0178)}$	$\frac{0.80}{(.032)}$	$\frac{2.2 \text{ to } 2.6}{(.087 \text{ to } .102)}$
CAY16-J2	$\frac{0.7 \text{ to } 0.9}{(.028 \text{ to } .035)}$	$\frac{0.4 \text{ to } 0.5}{(.016 \text{ to } .020)}$	$\frac{0.80}{(.032)}$	$\frac{2.0 \text{ to } 2.6}{(.079 \text{ to } .102)}$

Packaging Dimensions



Model	a	b	c	d	e
CAT16-F4, -J4 & CAY16-F4, J4	$\frac{3.60 \pm 0.20}{(.142 \pm .008)}$	$\frac{3.50 \pm .005}{(.138 \pm .004)}$	$\frac{8.0 \pm 0.3}{(.315 \pm .012)}$	$\frac{9.0 \pm 0.3}{(.354 \pm .012)}$	$\frac{11.4 \pm 1.0}{(.449 \pm .040)}$
CAT16-J2 & CAY16-J2	$\frac{1.80 \pm 0.10}{(.070 \pm .004)}$	$\frac{3.50 \pm .005}{(.138 \pm .004)}$	$\frac{8.0 \pm 0.3}{(.315 \pm .012)}$	$\frac{9.0 \pm 0.3}{(.354 \pm .012)}$	$\frac{11.4 \pm 1.0}{(.449 \pm .040)}$
CAT16-F8, -J8	$\frac{6.90 \pm 0.20}{(.272 \pm .008)}$	$\frac{5.50 \pm 0.10}{(.217 \pm .004)}$	$\frac{12.0 \pm 0.2}{(.472 \pm .008)}$	$\frac{13.0 \pm 0.2}{(.512 \pm .008)}$	$\frac{15.4 \pm 1.0}{(.606 \pm .040)}$
CAY16-J8	$\frac{4.10 \pm 0.15}{(.161 \pm .012)}$	$\frac{3.50 \pm 0.05}{(.138 \pm .002)}$	$\frac{8.0 \pm 0.3}{(.315 \pm .012)}$	$\frac{9.0 \pm 0.3}{(.354 \pm .012)}$	$\frac{11.4 \pm 1.0}{(.449 \pm .040)}$

- 5,000 pcs. per reel (J2, J4, CAY16-J8)
- 4,000 pcs. per reel (CAT16-F8, -J8)
- Paper tape

REV. 08/10

Specifications are subject to change without notice. Customers should verify actual device performance in their specific applications.

Mouser Electronics

Authorized Distributor

Click to View Pricing, Inventory, Delivery & Lifecycle Information:

Bourns:

[CAT16-150J4](#) [CAT16-560J4](#) [CAT16-240J4](#) [CAT16-510J4](#) [CAT16-220J4](#) [CAY16-6801F4](#) [CAY16-J4-LAB2](#) [CAY16-6040F4](#) [CAT16-301J4](#) [CAY16-183J4](#) [CAT16-153J4LF](#) [CAY16-683J8LF](#) [CAY16-183J8LF](#) [CAY16-301J4](#) [CAY16-1002F4](#) [CAT16-333J4](#) [CAT16-242J4](#) [CAY16-183J4LF](#) [CAY16-120J8LF](#) [CAY16-220J8LF](#) [CAY16-274J4](#) [CAY16-683J4LF](#) [CAY16-333J4](#) [CAT16-270J4](#) [CAY16-334J8LF](#) [CAY16-821J4LF](#) [CAT16-1003F4](#) [CAY16-621J4](#) [CAY16-153J4](#) [CAT16-2702F4](#) [CAY16-91R0F4](#) [CAT16-1690F4LF](#) [CAY16-222J8LF](#) [CAY16-122J8LF](#) [CAY16-474J4](#) [CAY16-100J8LF](#) [CAY16-472J4GLF](#) [CAY16-222J4GLF](#) [CAY16-1202F4](#) [CAY16-102J4GLF](#) [CAT16-120J4](#) [CAT16-000J4](#) [CAY16-124J4](#) [CAT16-2703F4LF](#) [CAT16-1003F4LF](#) [CAT16-86R6F4](#) [CAT16-682J2](#) [CAT16-682J4](#) [CAT16-103J4](#) [CAT16-103J8LF](#) [CAY16-4751F4](#) [CAT16-3R0J4](#) [CAT16-3R0J2](#) [CAY16-203J4LF](#) [CAY16-103J4LF](#) [CAY16-161J4](#) [CAY16-3010F4LF](#) [CAY16-151J4LF](#) [CAY16-1210F4LF](#) [CAY16-5110F4LF](#) [CAY16-5491F4](#) [CAT16-000J4G](#) [CAT16-151J8LF](#) [CAY16-224J4](#) [CAT16-1800F4LF](#) [CAY16-103J4G](#) [CAY16-2430F4](#) [CAT16-360J4](#) [CAY16-105J4](#) [CAY16-330J4LF](#) [CAT16-681J8LF](#) [CAY16-430J4LF](#) [CAY16-1622F4](#) [CAT16-431J4](#) [CAY16-6040F4LF](#) [CAY16-130J4LF](#) [CAY16-202J4](#) [CAT16-390J4](#) [CAY16-120J4](#) [CAT16-2400F4LF](#) [CAT16-2000F4LF](#) [CAT16-2200F4LF](#) [CAT16-4700F4LF](#) [CAT16-3300F4LF](#) [CAT16-1000F4LF](#) [CAY16-49R9F4](#) [CAT16-1500F4LF](#) [CAT16-1100F4LF](#) [CAY16-2200F4LF](#) [CAY16-2700F4LF](#) [CAY16-3300F4LF](#) [CAY16-1100F4LF](#) [CAY16-1500F4LF](#) [CAY16-1000F4LF](#) [CAY16-1200F4LF](#) [CAT16-20R0F4](#) [CAY16-221J4](#) [CAT16-1002F4](#) [CAY16-6801F4LF](#) [CAY16-153J4LF](#)